

New Perspectives

The Design Hotels™ Book
Edition 2020



Chicago Classic

The Robey

Wicker Park | Chicago | United States

For she is never the Chicago you saw when you
passed through the last time ... — Mark Twain

Photographed by Danilo Scarpati

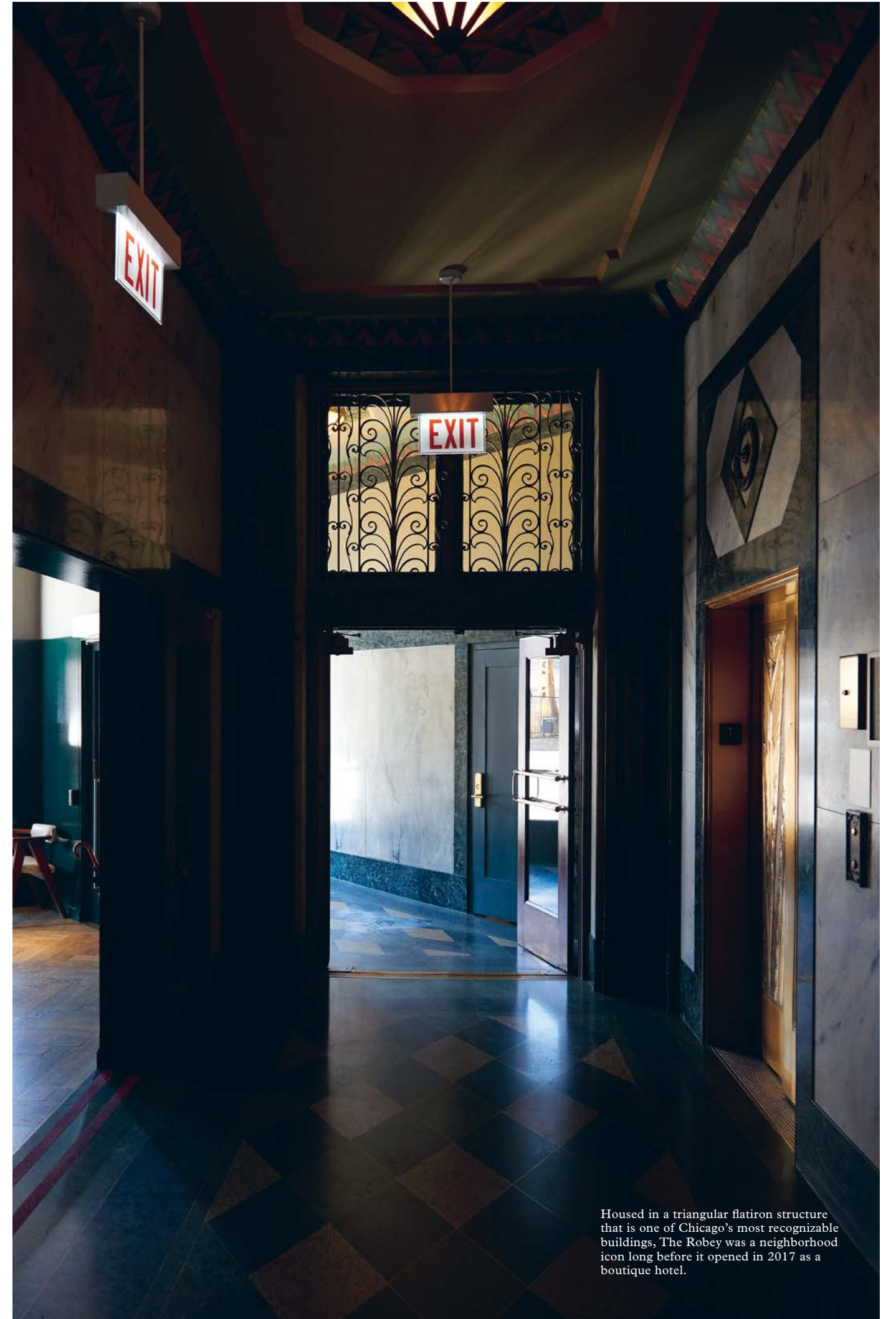


The rooftop Up Room serves up signature cocktails, like the Duck Fried Rice, made with sesame-infused Aylesbury Duck Vodka, lemongrass-infused Fords Gin and Bittermens Tepache, with a generous helping of view.

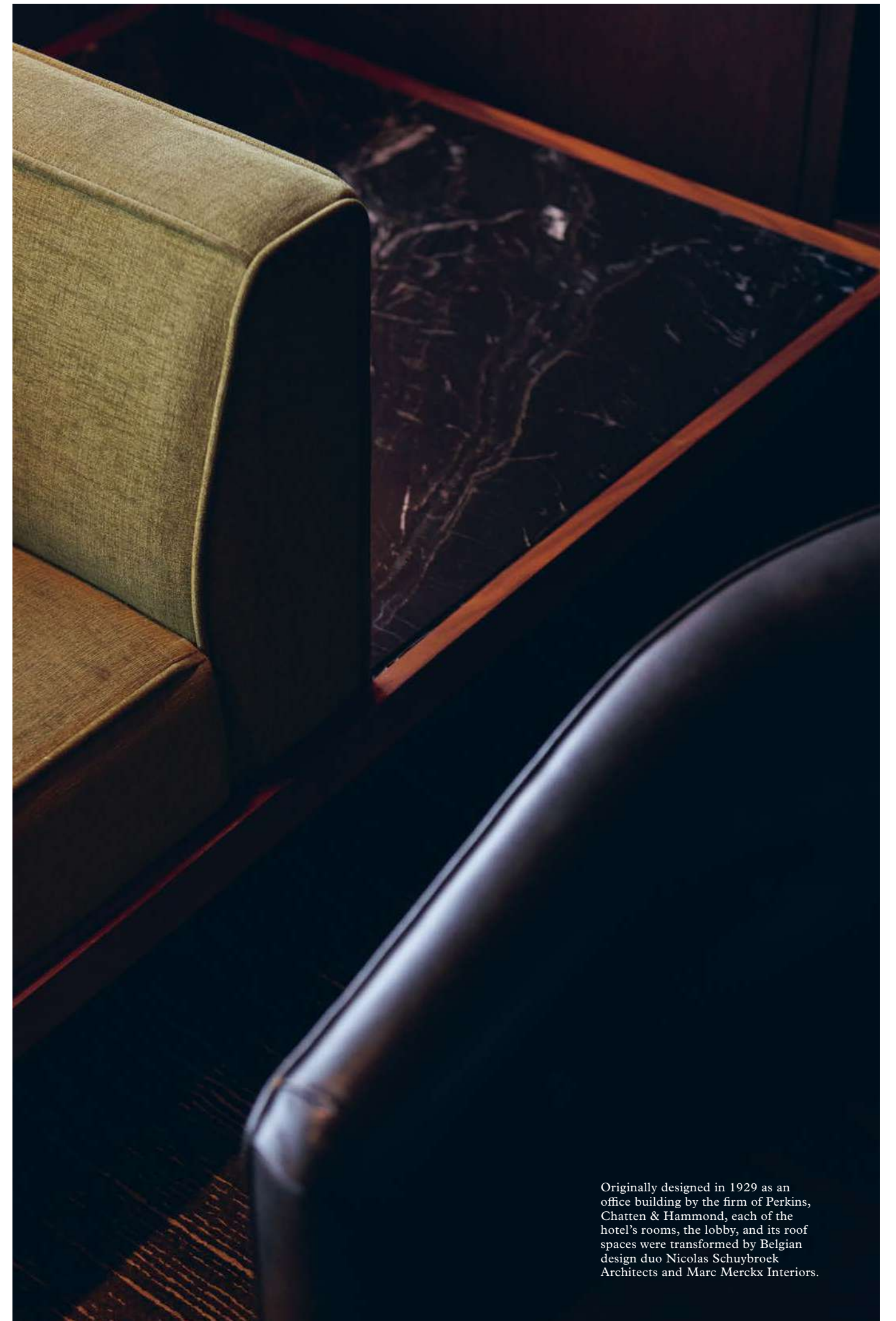
Occupying an iconic art deco building that soars over the booming Wicker Park neighborhood, The Robey pays glamorous tribute to Old Chicago, reflecting local character through design, from restored original details and stylishly appointed guestrooms to the happening rooftop cocktail bar where the neighborhood gathers to take in the ever-changing skyline.







Housed in a triangular flatiron structure that is one of Chicago's most recognizable buildings, The Robey was a neighborhood icon long before it opened in 2017 as a boutique hotel.





The Panorama Suite includes a king-sized bed, double vanity, comfortable sitting area, work desk, and living room with a private bar, as well as 180-degree views of the Chicago skyline. All guestrooms feature hardwood floors, Egyptian cotton, and pristine glass walls separating the bedrooms from the bathrooms.



The Robey

Location

Wicker Park
Chicago
United States

Owners

Carlos Couturier and
Moisés Micha

Architecture

Antunovich Associates

Interior Design

Nicolas Schuybroek Architects
and Marc Merckx Interiors

Room Count

89

Open

Year-round

Live the true Chicago high life at a 1920s landmark reborn as an instant-classic neighborhood hub perched high in the sky over creative Wicker Park.

Architecture & Design: Hovering high above the live music venues, cafés, and boutiques of Chicago’s trending Wicker Park and Bucktown neighborhoods, The Robey resides inside two starkly different buildings that each has its own place in Chicago’s history. First, the gray limestone structure that houses the Tower Rooms is one of the tallest in the Wicker Park/Bucktown area, and its triangular flatiron shape ensures that it stands out as one of the neighborhood’s most recognizable landmarks. Although formally called the Northwest Tower, the 1929-built building was nicknamed the Coyote Building due to its “howling” appearance. The adjoining Hollander Fireproof Warehouse is home to the hotel’s 20 Annex Loft guestrooms and an open-plan lobby with a “neighborhood hub” feel. The original revolving door was restored by the original, Indiana-based manufacturer.

Food & Drink: The Robey’s food and beverage offerings include Café Robey, a ground-floor modern American bistro, casual café The Lounge, and two rooftop spaces: the pool bar, Cabana Club, and cocktail bar The Up Room, both offering 180-degree views of the spectacular Chicago skyline.

Environment: First incorporated into the city of Chicago in 1837, the Wicker Park district went on to welcome waves of immigrants to the city —first Irish, then German, Scandinavian, Polish, and Jewish, as reflected today in many of the bakeries and grocery stores that still speckle its tree-lined streets of Victorian houses. Today the adjoined districts of Wicker Park and Bucktown hum with restaurants and galleries, cafés, studios, and record stores where visitors can scout for local legends like Curtis Mayfield and Sam Cooke. •

The 2020 edition of The Design Hotels™ Book delves deeper, presenting an in-depth, individualized look at 25 new hotels around the world that are changing the way we think about hospitality.

DESIGN HOTELS™